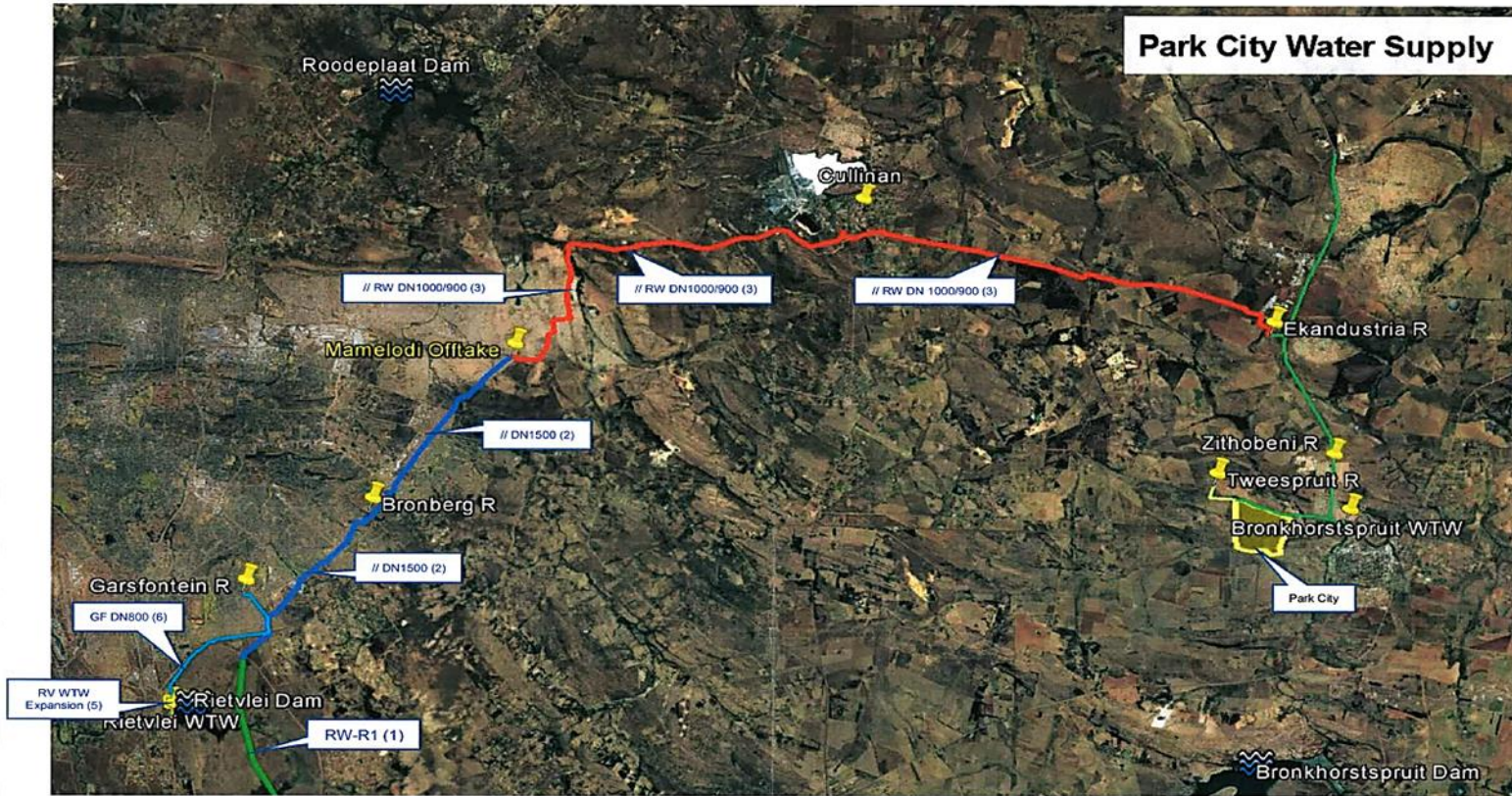


# Rietvlei projects



- Notes:**
1. RW – R1 pipeline: Already upgraded/augmented.
  2. Construction to start soon. New parallel DN1500. Commission within 3 – 6 years.
  3. Future new parallel DN1000/900.
  5. New 50 MI/day expansion of the Rietvlei Water Treatment Works. Treated water pumped to Garsfontein Reservoir.
  6. New DN800 pumpline to Garsfontein Reservoir

